

Sustainable Building Design Feature in Green Deck 綠化平台中的可持續建築設計特色

Green Coverage
綠化比率

~41%

Estimated Local Temperature Reduction
估計局部降溫

~-2.2°C



紅磡海底隧道收費廣場擬建綠化平台 Proposed Green Deck at the Cross Harbour Tunnel Toll Plaza

A Dream of turning Grey to Green
一個由灰變綠的夢想

Green Deck's Benefits to the Environment and Health in an Urban Setting 綠化平台在都市中對環境和健康的益處

Use of Sustainable Building Materials 使用可持續建築材料

Use of Sustainable Building Material such as Eco-block 使用環保磚等可持續建築材料

Air Purification 空氣淨化

Air Purification System - Process air pollutants from tunnel traffic underneath the Green Deck
空氣淨化系統 - 處理來自綠化平台下方隧道交通的空氣污染物

Introduction of Native Tree Species
種植本地原生樹木

Carbon Sequestration, Tree Planting and Biodiversity 碳封存、種植樹木和生物多樣性

Carbon sequestration through planting on GD
碳封存 - 在綠化平台種植樹木

400+

Maintain Biodiversity
維持生物多樣性

Water Consumption Reduction 減少用水量

Applying efficient water fixtures
使用高效的水裝置

Rainwater Recycling
雨水回收

Annual water consumption reduction by both strategies are equivalent to around
兩種策略每年減少的最少用水量相當於

4 standard main swimming pools in HK
香港標準主游泳池

Renewable Energy Integration 整合可再生能源

Electricity generation from the renewable energy is equivalent to
可再生能源發電量相當於

~220

typical household's annual electricity consumption
典型家庭的年用電量



Carbon Reduction
減少碳排放



Reduce Heat Island Effect
降低熱島效應



Encourage Active Lifestyle
鼓勵動態生活模式



Improve Walkability
提升可步行性

Energy Efficiency Measures 提升能源效率措施

Potentially save
整體能效措施
可潛在節省

~580

typical household's annual electricity consumption
典型家庭的年用電量



落實願景 Translating Vision into Reality

雖然綠化平台是一個以地區為本的項目，但由於它規模宏大，並需涉及龐大資源，如果要落實項目，政府的參與是必須的。我們會繼續與政府和社會大眾進行討論，期盼有一天能落實這個「啟迪思維·成就未來」的社會創新項目。

While the Green Deck is a community based project, the involvement of the government is a must given its mega scale and resources involved if we want to take this project forward. We will continue to engage the government and the wider community with a view to bringing this "Opening Minds · Shaping the Future" social innovative project into reality.

你的意見至為重要，請電郵至：
Your views count! Please send them to:
info.gdpmo@polyu.edu.hk

Share with us
your views
分享您的意見



(<https://forms.gle/gwMQ9QQmhuC6z1VF9>)

About us
關於我們



Green Deck Website
綠化平台網站
www.greendeck.hk



Existing Condition of the Cross Harbour Tunnel Toll Plaza
海底隧道收費廣場的現況

4 Key Objectives of Green Deck 綠化平台的4個主要目標



Objective 1:
Satisfying social needs by enhancing local amenities

目標 1:
改善社區設施，
滿足社會需要



Objective 2:
Rebuild community connectivity through pedestrian/vehicular separation

目標 2:
通過人車分流，
重建社區聯繫



Objective 3:
Improve air quality and uphold community health

目標 3:
改善空氣質素，
維護社區健康



Objective 4:
Revitalising depressed urban centres and upgrading local economy

目標 4:
振興城市中心，
提升地方經濟

Organiser 主辦單位



Supported by 協辦單位

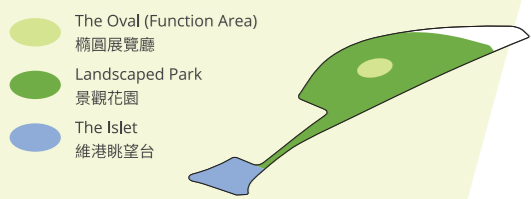




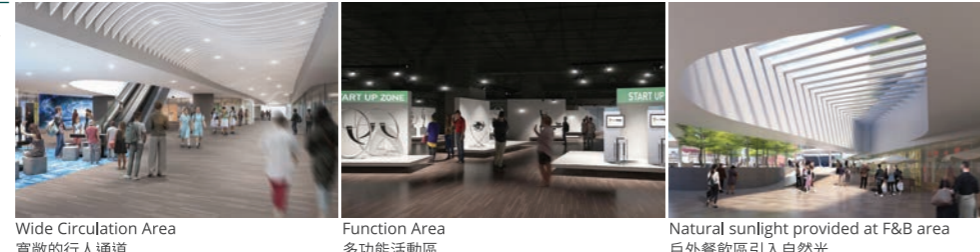
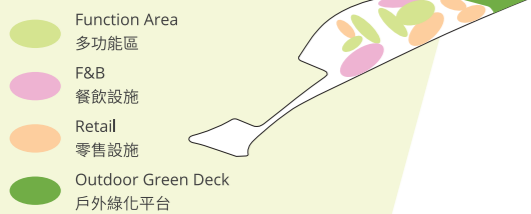
Objective 1:
Satisfying social needs by enhancing local amenities
目標 1:
改善社區設施, 滿足社會需要



Deck Level 平台層 + The Islet 維港眺望台



Mezzanine Level 中層

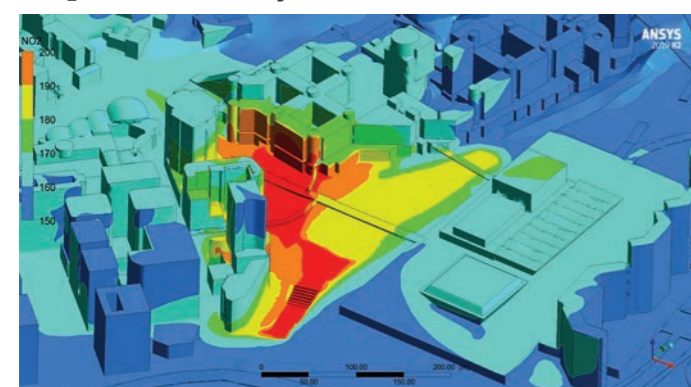


Ground Level 地面層

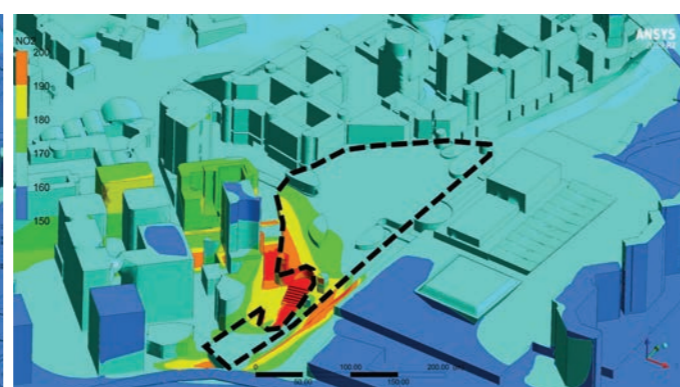


Objective 3:
Improve air quality and uphold community health
目標 3:
改善空氣質素, 維護社區健康

NO₂ Dilution Analysis 二氧化氮稀釋分析



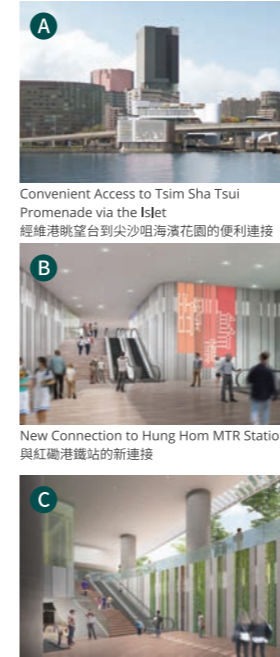
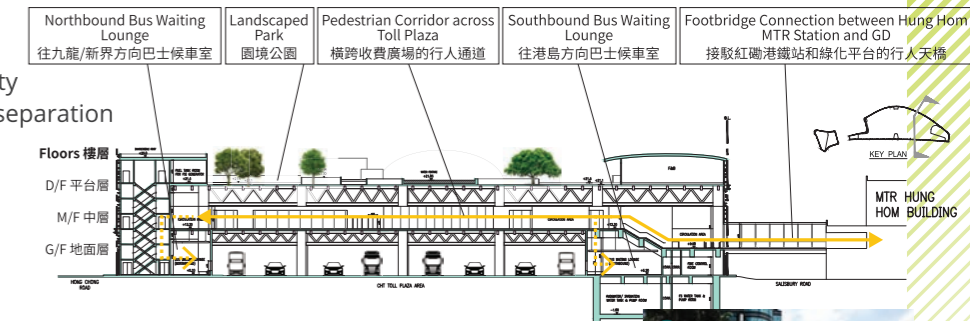
Base Case (No Green Deck) 基線情景 (沒有綠化平台)



Proposed Scenario (with Green Deck) 擬議情景 (有綠化平台)

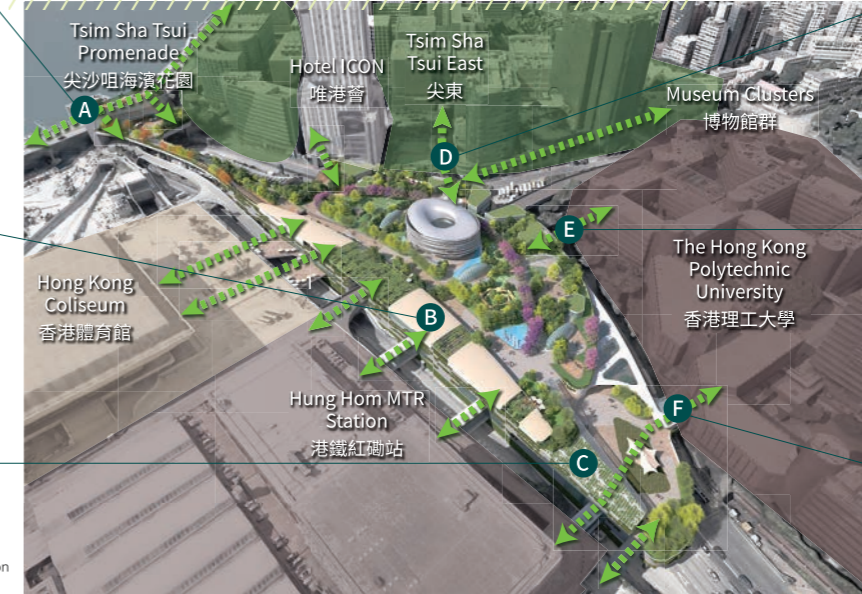


Objective 2:
Rebuild community connectivity through pedestrian/vehicular separation
目標 2:
通過人車分流, 重建社區聯繫



Revised Connection to Hung Hom MTR Station 改善與紅磡港鐵站的現有連接

Connection to Surroundings 與相鄰建築的連接

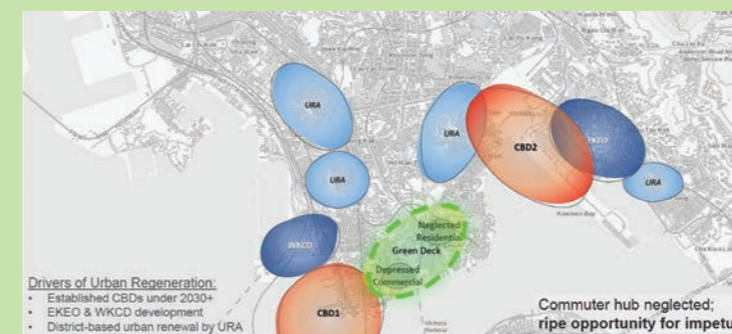


Improving Environment of Existing Connection with PolyU near Core P 改善與理大P棟連接的環境



Objective 4:
Revitalising depressed urban centres and upgrading local economy
目標 4:
振興城市中心, 提升地方經濟

Green Deck could catalyse ongoing and potential developments around the Kowloon Peninsula
綠化平台可協助推動九龍半島周圍持續及潛在的發展



- Green Deck Immediate Living Circle 綠化平台生活圈
- Central Business Districts (CBDs) 中央商業區
- Energising Kowloon East Office (EKEO) and West Kowloon Cultural District (WKCD) Development 起動九龍東及西九文化區發展
- District-based Urban Renewal Efforts by Urban Renewal Authority 市區重建局市區重建地區

Culture & Arts - World Class Waterfront 文化藝術—世界級海濱



South Kowloon Harbourfront connecting coastal cultural and art establishments 南九龍海濱將沿岸文藝設施串連起來